

Multi-Site Fiber Optic Infrastructure Project Q&A

1. We identified a major discrepancy between the lateral distances listed in the RFP and the actual route footage obtained from the KMZ files and GIS measurement.

The scope sections list:

- 3,121 ft lateral for N Main to Bell St
- 5,500 ft lateral for 205 N Cornell Ave
- 6,500 ft lateral for 500 N Main St

However, our measured route footages based on the KMZ file are significantly higher:

- N Main to Bell St Route: 519,616 ft
- Cornell to Bell: 728,987 ft
- Weatherly to Bell: 653,460 ft

The scope section lists the distance to connect to an existing backbone, while the KMZ file shows the full example route including the backbone. I have asked for clarification on the connection to the backbone, but I have not received that information yet.

2. Could you please provide more detailed information regarding the materials and labor required to complete this project? This will help us prepare an accurate and comprehensive pricing proposal.

The County is not specifying materials to be used. This is up to the bidding party to determine what materials and labor will be necessary to create the connections.

3. Additionally, could you please confirm whether quantity details are available for each item? If a pricing sheet exists, we would greatly appreciate it if you could share it with us.

The County is not providing any materials.

4. Could you also let us know the expected project start date, please?

We are not specifying a start date, however all work MUST be completed by December 1st 2026.

5. Is there a kmz or print of the pathways for these 3 underground/ fiber runs?

The only KMZ we have is posted on the website (<https://www.co.hutchinson.tx.us/page/hutchinson.PublicNotices>). This is an example of routes that could be taken.

6. Could you provide more details around what you are needing for the Bond/License part of the bid? Our legal team and insurance company are seeking more clarification on what the ask is. We can offer a license bond to the County of Hutchinson, but in what amount? We can also provide a surety letter that shows we provide bonds and can write a performance and payment bond in the estimated amount.

We are assuming the projects will exceed the \$100,000 threshold. Therefore, these are requirements from Texas Government Code 2253 Subchapter B. Anything that meets those requirements is acceptable. Therefore, a surety letter would be acceptable.

On the amounts, the Bid bond should be 5% of the total proposal. For the Performance and payment bonds, these must be for the total amount of the project.

7. I came across the subject project and I downloaded the .kmz file but I'm unable to determine exactly where the new fiber will tie into the existing fiber. All I'm seeing is the existing backbone. Do you have any other detailed drawings/plans that could be shared?

At the moment this is all the information I have from our consultants. They are working on additional information for me about how things will tie into the backbone.

8. Can the county provide Davis Bacon wage rates for all zip codes in the construction areas?

The county will adopt the Wage Determinations from sam.gov. The most recent Davis Bacon wage rates for Hutchinson County can be found at: <https://sam.gov/wage-determination/TX20250207/4>

9. Will mule tape and tracer be required on either conduit? Grounding Rods?

Yes, required. Both the conduit and innerduct (if used) must contain a traceable line and mule tape (pull string). A grounding rod will be required at the main Point of Entry (POE) for the NID.

10. Upon connecting to existing infrastructure, will EMT be required to enter the facilities/ network ties?

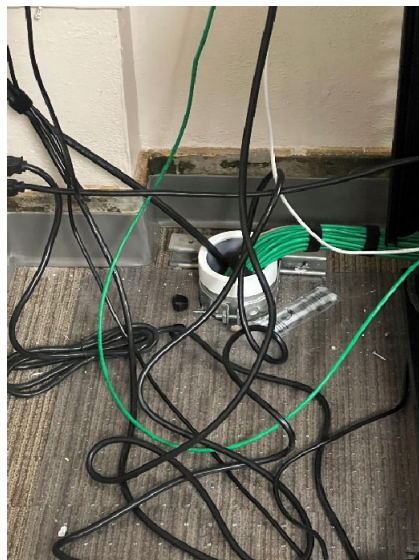
Yes, required. All interior vertical and exterior surface penetrations and runs must be housed in Electrical Metallic Tubing (EMT), sized appropriately, from the POE to the NID.

11. Can the county detail the entrance plan to facilities? Should materials/ costs be itemized for those entrances?

In the Borger and Fritch libraries the service can come in arial from that alley and into a brick wall (existing Borger wall show as example).



For the Stinnett Library it must be brought into building via conduit into a drop ceiling and then up into the server room through an existing boot. Example pictures of the boot in the server room and a conduit outside the building are below.



12. Are any of the routes to be prioritized over the others? Restrictions on months or times during 2026?

No

13. Can the county provide a detailed map, other than the referenced KMZ to detail the proposed Fiber route? Or specify what routes are to be completed in this bid?

No

14. Will the county accept conduit plowing as an acceptable means of installation?

No unless specifically authorized in contract negotiations.

15. Are Handholes required to be any particular rating(Tier 15/ 22)? Composite/ Cement/ Poly?

Tier 22, Cement/Concrete. Handholes in vehicular traffic areas (ROW, parking lots) must be rated Tier 22 (heavy-duty traffic) and made of pre-cast reinforced concrete. Tier 15 may be used in landscape areas.

16. Does the county have a preference on fiber manufacturer?

No

17. Will any splicing be involved in this bid?

Yes, required at specific points. Splicing is required at all Handholes (HHs) and for the final connection (fusion splice) to the premise fiber at the NID.

18. Can the county reference traffic control requirements for the county/ city/ TXDOT that may be required for this construction?

No

19. Are any materials to be provided by the county?

No

20. Will materials storage be on County property or will the contractor have to provide a location?

Depending on size of space needed this may or may not be possible. This would have to be negotiated during contract negotiations

21. Will a wastewater and debris site be available through the county to dump spoils and excess materials?

No

22. Can the county detail the jurisdictions the jobs will be operating?

The work will occur in Hutchinson County, The City of Borger, The City of Fritch, and the City of Stinnett

23. Can the county detail an approximate cost of permits?

No

24. Are any areas in the construction area in sensitive environmental areas, or areas requiring outside surveys, costs, or additional permitting? TXDOT?

We are not aware of any at this time

25. Will the NID's require cabinets, storage racks, etc....? Can the county provide the awarded contractor a final approval before materials are ordered?

Cabinets – yes, Yes for final approval before ordering

26. Does the county require special certifications for technicians working on network assets?

Yes, required. Lead technicians must possess ETA Fiber Optic Installer (FOI) or Certified Fiber Optic Technician (CFOT) certification. Personnel in the ROW must have relevant safety certifications (e.g., MUTCD).

27. Are there certain hours or days that construction is not allowed (i.e. holidays, time restrictions, events)?

We are not aware of any at this time

28. Can the county detail the restoration requirements for hard surface, soft surfaces, ADA ramps, sidewalk panels?

Any areas should be restored to original condition upon completion of work

29. Can the county detail the handhole placement requirements for HH's in the ROW or in easements?

Handholes must be placed: 1) At every major change in direction, 2) Every 1,000 feet (maximum distance), 3) At all utility crossings/access points.

30. Is all engineering completed? Accepted?

No,

31. Will plan and profile be required on any portion of the routes?

Yes, required for specific sections. Plan and Profile drawings are required for all segments that involve directional boring (HDD) or crossing utility-dense areas in the Right-of-Way (ROW).